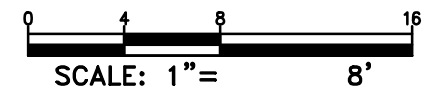
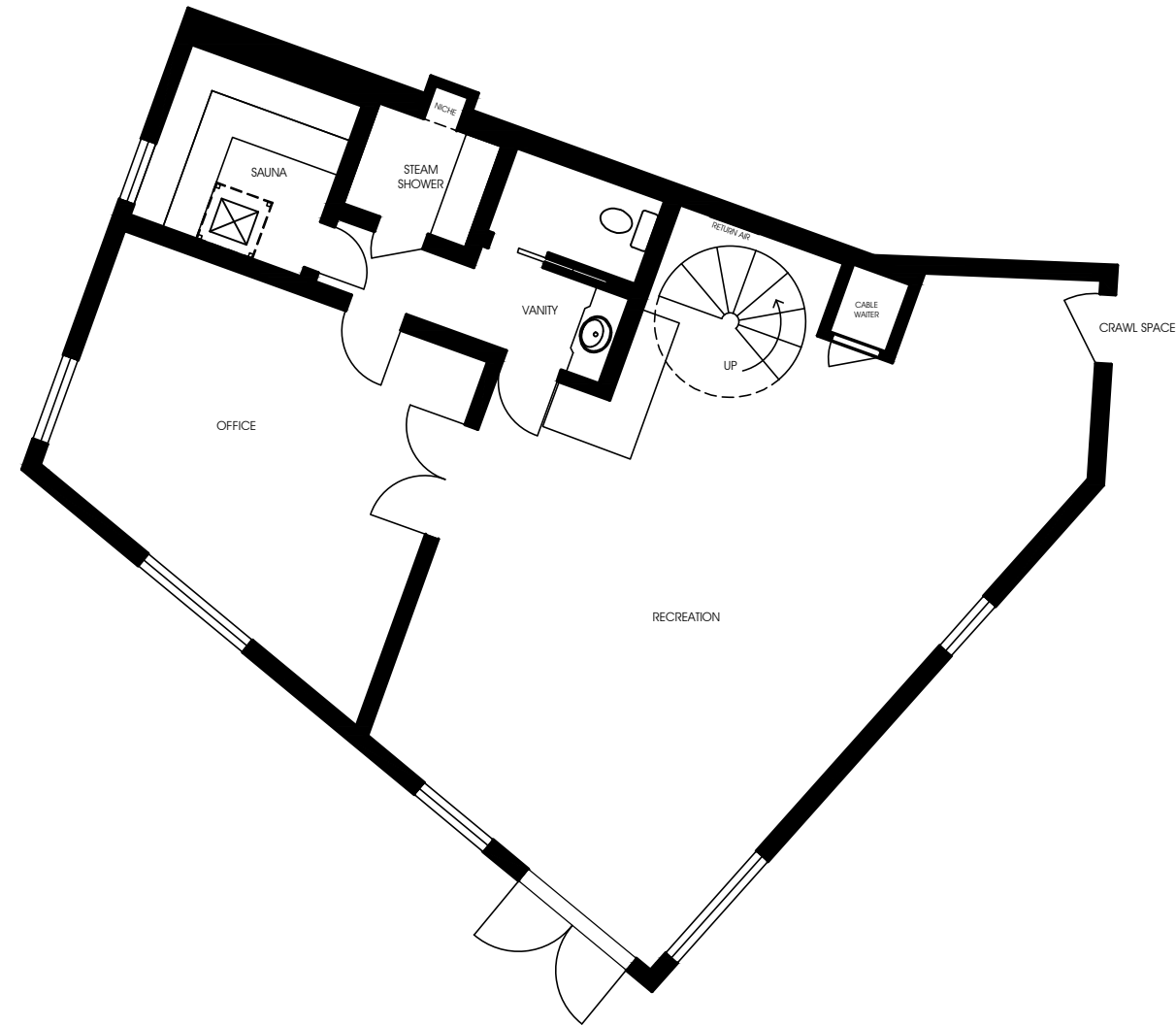


FIRST FLOOR PLAN, AS-BUILT, MAIN HOUSE

1" = 8'-0"

POIRIER + ASSOCIATES ARCHITECTS
 156 West Alamar Ave - Suite C - Santa Barbara, CA - 93105
 tel 805.682.8894 fax 805.898.9683 poirierandassociates.com



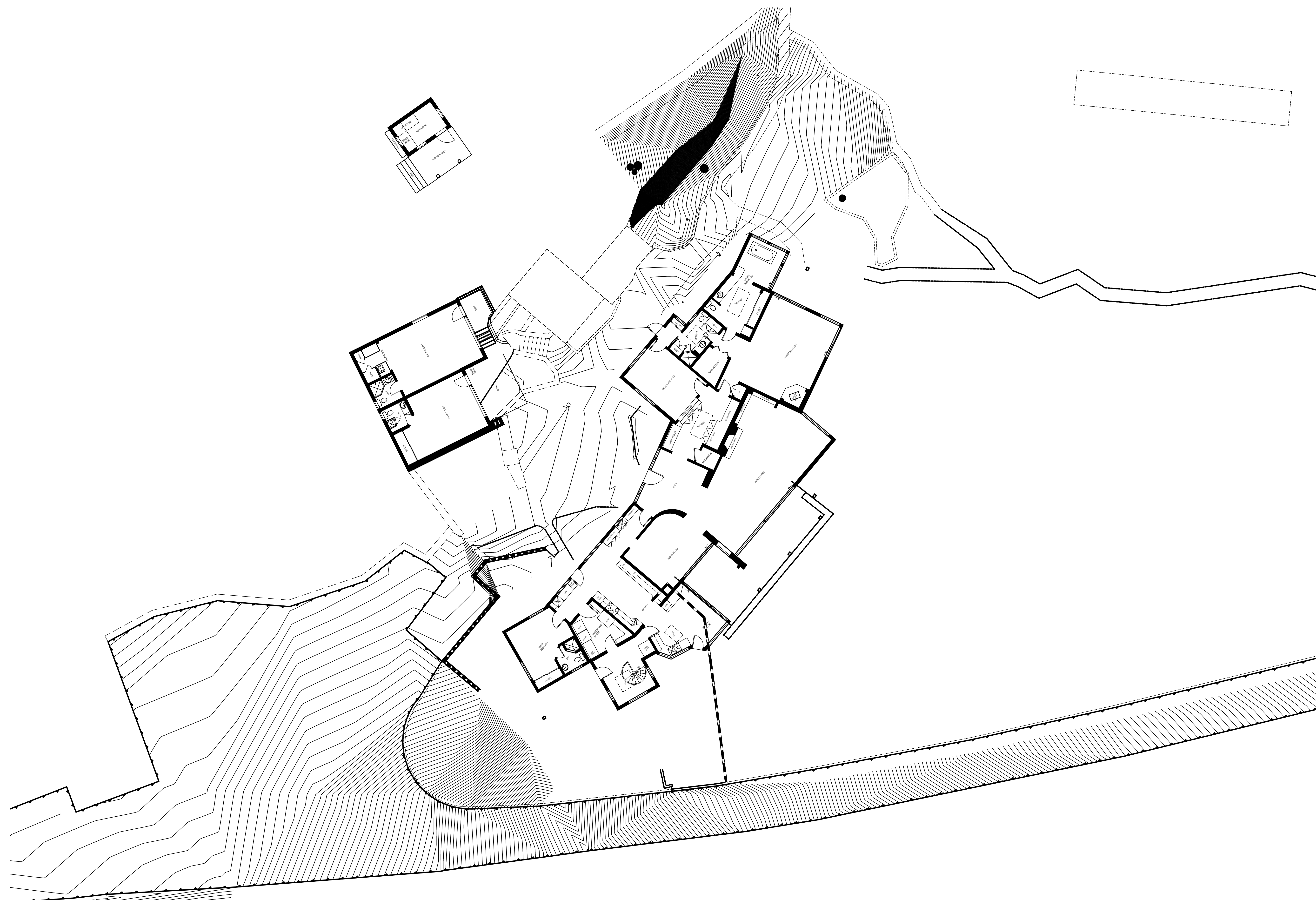


BASEMENT FLOOR PLAN, AS-BUILT, MAIN HOUSE

1" = 8'-0"

POIRIER + ASSOCIATES ARCHITECTS
156 West Alamar Ave - Suite C - Santa Barbara, CA - 93105
tel 805.682.8894 fax 805.898.9683 poirierandassociates.com





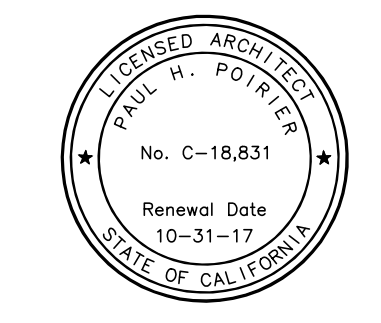
SITE PLAN

3/32" = 1'-0"

PROJECT CODE: 1527
 FILENAME: 1527 Site Plan.dwg
 ISSUE DATE:

 DRAWN BY:
 CHECKED BY:
 APPROVALS: DATE:

 PRINT DATE: Apr 18, 2016, 3:53pm
 REVISIONS:
 NO: DATE: COMMENTS:



Paul Poirier + Associates
 ARCHITECTS
 156 West Alamar Ave. • Suite C • Santa Barbara, CA 93105
fax (805) 898-9683 *telephone* (805) 682-8894

Scolari Ranch
 Residential Remodel
 PROJECT CONTACT:
 Randy Polif
 (805) 781-9700
 SITE ADDRESS:
 4550 Noble Ln.
 Templeton, CA
 93485

A1.1
 SITE PLAN